

ONE
HYDE
PARK



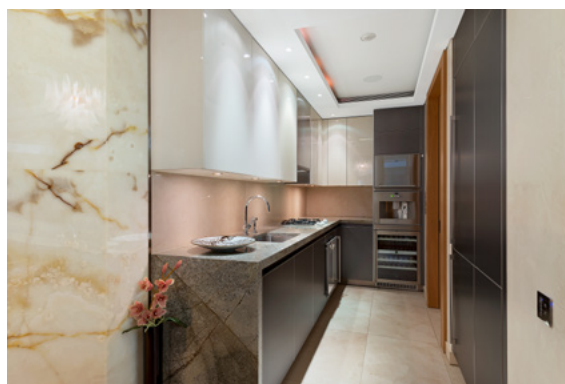
C.01.1 is a beautifully presented two bedroom apartment with sensational views into Hyde Park situated in one of Knightsbridge's most outstanding residential buildings.

Set on the ground and first floor, the apartment has two elegant and extremely tranquil bedroom suites looking out onto a manicured internal courtyard. Upstairs there is a wonderful living room and dining area with floor to ceiling windows offering glorious leafy views directly into Hyde Park and, uniquely for the building, a large and private terrace also looking directly into the Park.

The apartment was originally interior designed by the world famous design team from Candy & Candy creating a bespoke look that compliments both the contemporary elements of a leading residential building, as well as the more traditional and seasonal changing elements of London's Hyde Park.



ONE
HYDE
PARK



One Hyde Park

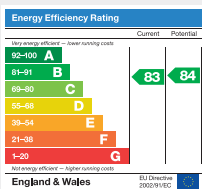
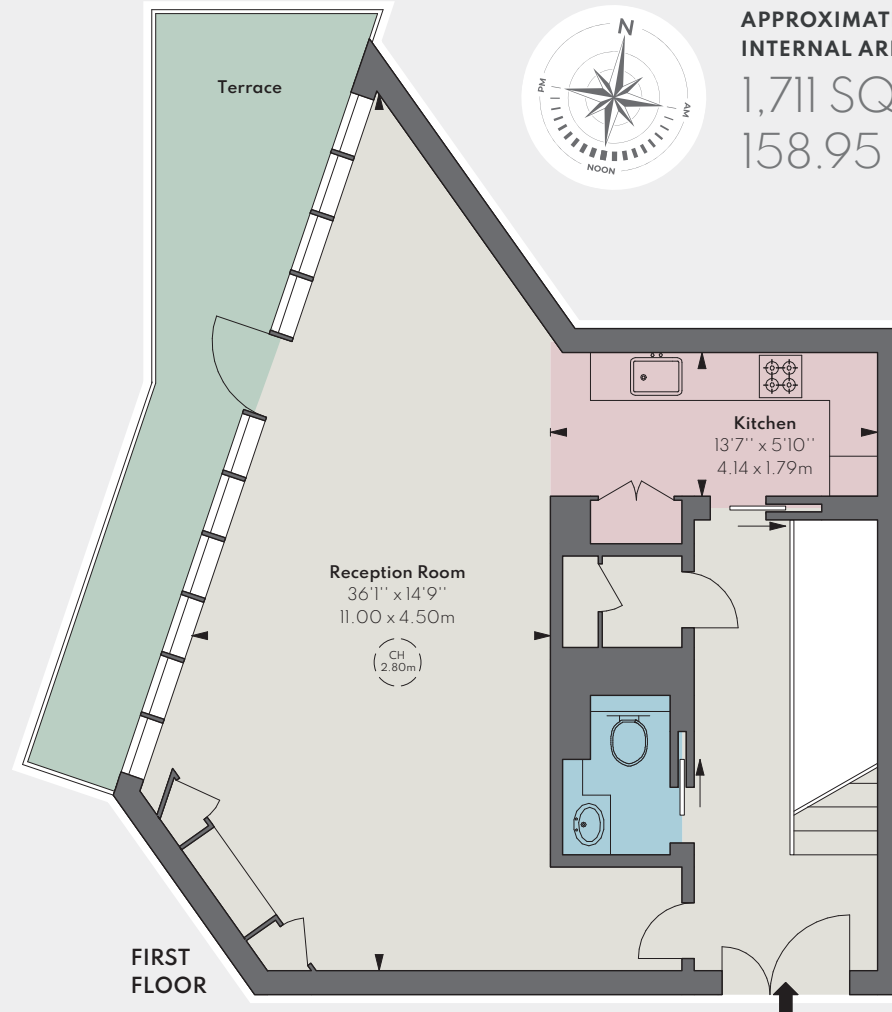
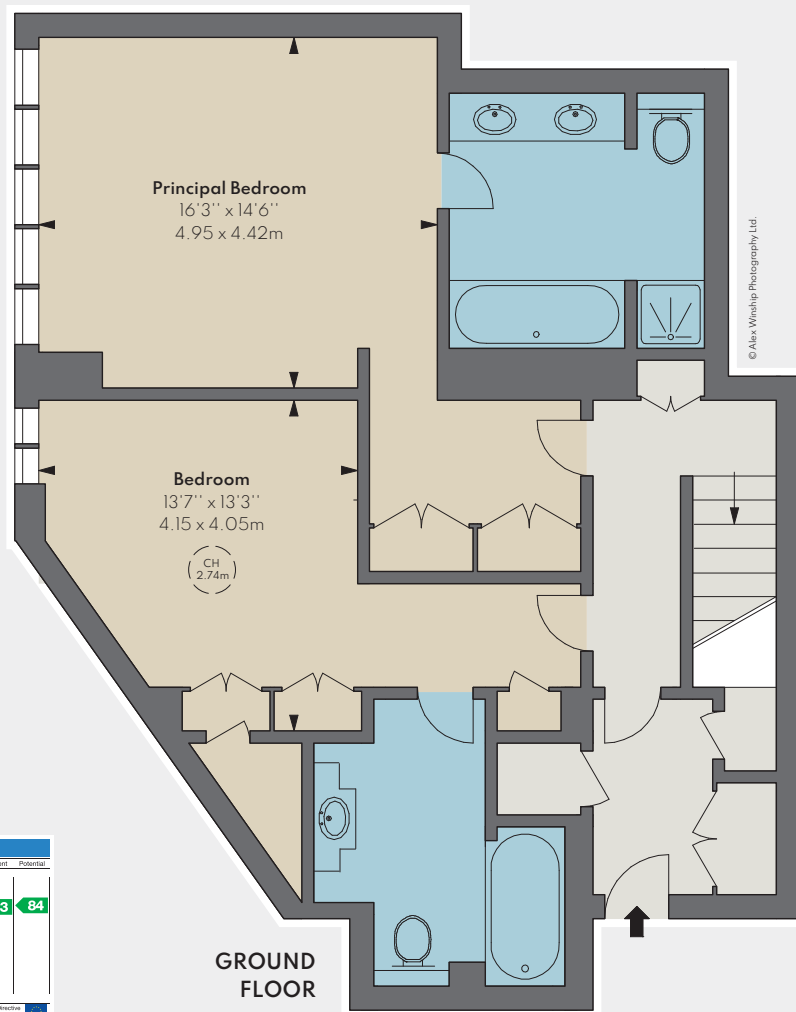
One Hyde Park is regarded as London's most prestigious residential address and provides its residents with outstanding services and facilities unmatched by many other developments. As well as 24 hour concierge and security provided by Mandarin Oriental, the apartment also comes with a secure underground parking space and residents have exclusive access to a wide range of facilities within the

building, including a state-of-the-art gym with separate studio/exercise rooms, 21m ozone swimming pool, multi purpose Squash Court, private spa including saunas and steam rooms, private wine storage, house car with chauffeur, dining/entertainment room with private kitchen, private cinema, and the Park Library with a bar and two private business/meeting rooms.



- Open-plan living room and dining area opening onto a large terrace
 - Two double bedroom suites
 - 24 Hour concierge and security
 - Fully equipped gym
 - Swimming pool and spa facilities
 - Private and secure underground parking space
 - Room service from the Mandarin Oriental
 - 24 Hour on-site maintenance personnel
 - In-house maid service
 - Same day laundry and dry cleaning
 - Squash court with digital scoring
 - Virtual games room with golf simulator
 - Serpentine Suite (including private dining room and private cinema)
- Tenure: Leasehold, approximately 983 years remaining
 Price: £8,950,000
 Service Charge: TBC
 Ground Rent: TBC
 Local Authority: City of Westminster





Important notice: Forges Gilbert-Green, Brabazon Morris, their clients and any joint agents give notice that: 1: They are not authorised to make or give any representations or warranties in relation to the property either here or elsewhere, either on their own behalf or on behalf of their client or otherwise. They assume no responsibility for any statement that may be made in these particulars. These particulars do not form part of any offer or contract and must not be relied upon as statements or representations of fact. 2: Any areas, measurements or distances are approximate. The text, photographs and plans are for guidance only and are not necessarily comprehensive. It should not be assumed that the property has all necessary planning, building regulation or other consents and Forges Gilbert-Green nor Brabazon Morris have not tested any services, equipment or facilities. Purchasers must satisfy themselves by inspection or otherwise. 08/02/22BMORRIS-220201-05GG

FORBES GILBERT-GREEN

+44 (0) 20 7871 7268
forbesgilbertgreen.com



BRABAZON MORRIS

+44 7967 555 719
benmorris@brabazonmorrison.com